

Regeneration Products

Collagen Membrane

Bovine

Features

- Biodegradable barrier membrane for guided bone and tissue regeneration
- Highly pure type I Collagen derived from bovine tendon sourced in New Zealand
- Thin membrane (300µm) with multiple layers for easy manipulation and high mechanical strength in surgery
- Resorption period of 6 months to provide enough time for stabilizing graft material and supporting bone growth



Implantation



Collagen Membrane



Second stage surgery



Final prosthesis

Dentium

Collagen Membrane

Applications

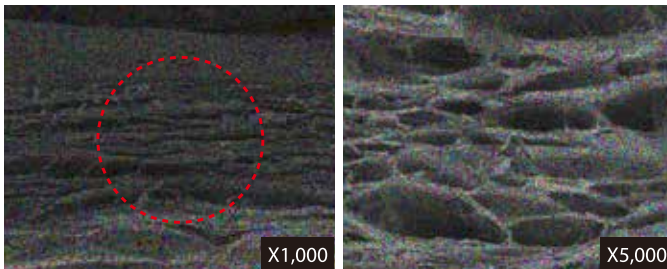
- Periodontal / infrabony defects
- Ridge augmentation
- Extraction sites (implant preparation / placement)
- Sinus lift
- GBR procedure

Characteristics

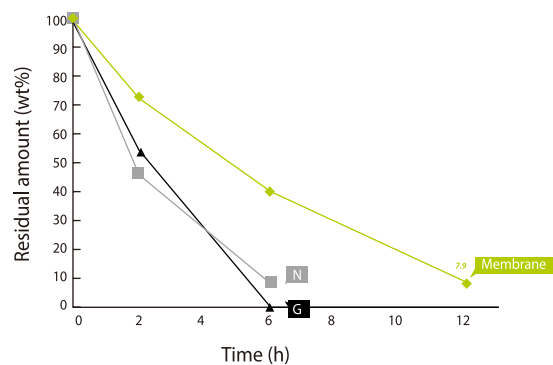
- Easy manipulation (Hard type)
- Both sides usable
- Barrier function lasting for 6 months
- Highly pure type I collagen



Microstructures



In Vitro Degradation



Animal Test



Rabbit calvaria model, 6 weeks

12 weeks